

2

Citizens of Lomita

City Council (5)

Planning Commission (7)
Public Safety & Traffic Commission (5)
Parks & Recreation Commission (5)
Railroad Museum Foundation Board (5)

City Attorney

City Manager

Parks & Recreation Director

Administrative Services Director

City Manager's Dept.
(City Clerk, Economic Development & Information Technology)

Asst. City Manager/
Community Dev. Director

Public Works Director/
City Engineer

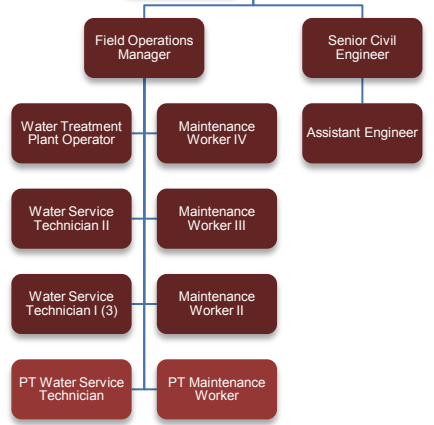
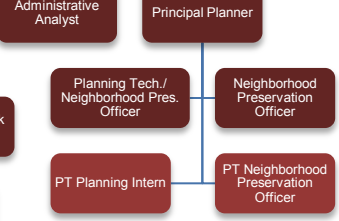
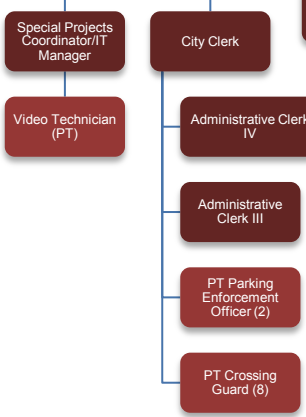
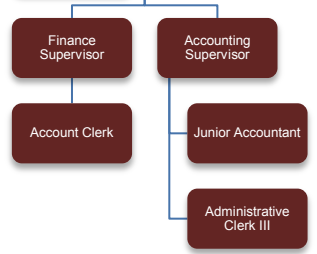
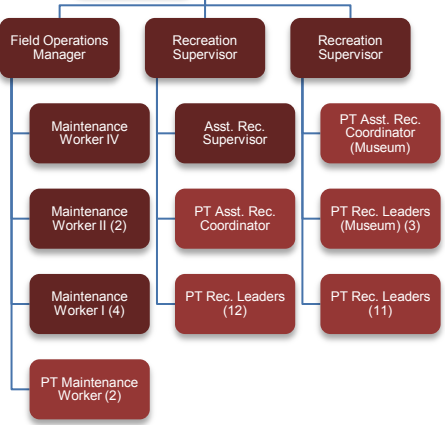
Park Office Manager

Management Analyst

Special Projects Coordinator/IT Manager
City Clerk

Administrative Analyst
Principal Planner

Administrative Clerk II



- City Manager/Directors (5)
- Full-time Employees (38)
- Part-time Employees (45)