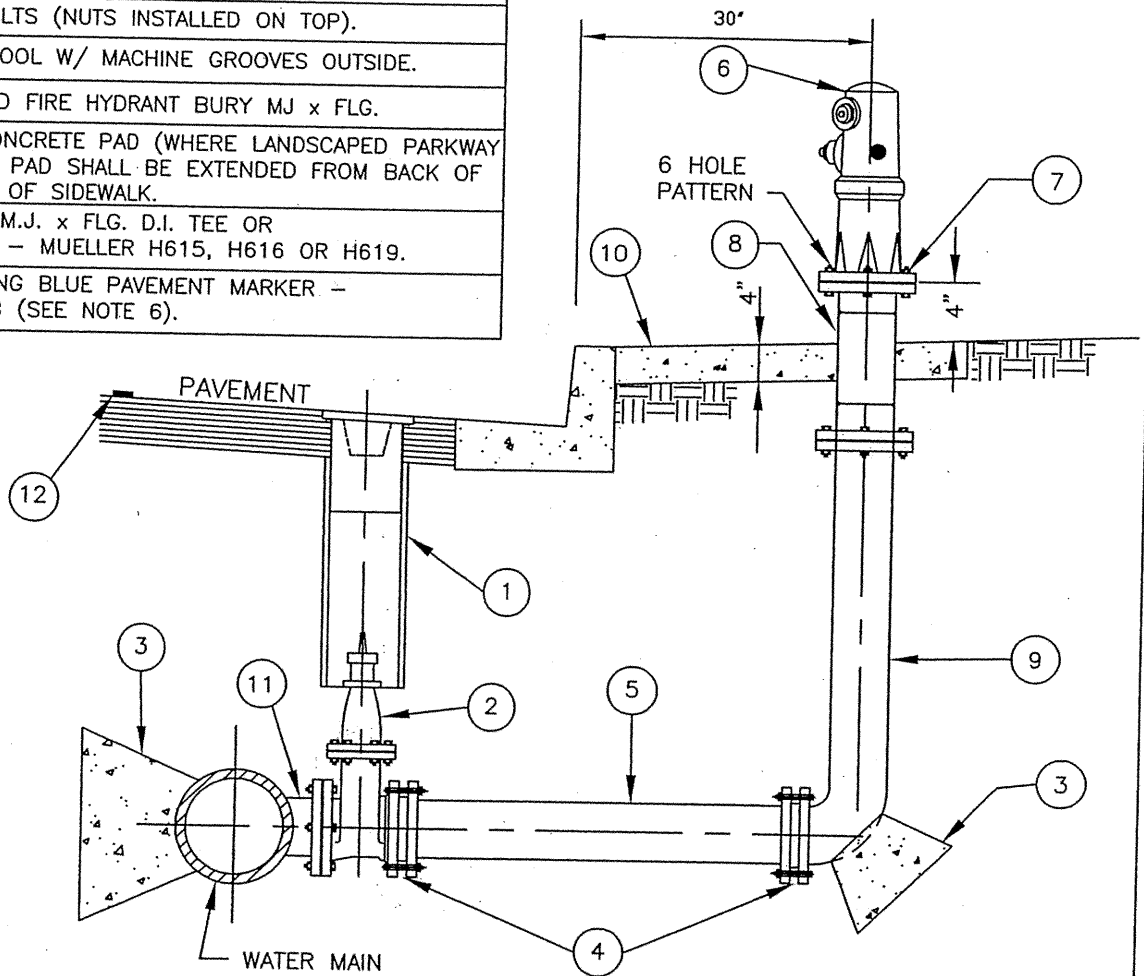


ITEM	MATERIALS
①	VALVE BOX ASSEMBLY PER T712.
②	6" VALVE MUELLER NO. A-2360-16 W/EVERDUR STEM & SS 316 FASTENERS W/2" NUT & NRS OPENING CCW.
③	CONCRETE THRUST BLOCK PER T713.
④	RESTRAINED JOINTS
⑤	6" D.I.P. (CLASS 350) SERVICE LINE
⑥	FIRE HYDRANT - JAMES JONES CO. J3700 WITH CHAIN AND PLASTIC CAPS.
⑦	BREAK-AWAY BOLTS (NUTS INSTALLED ON TOP).
⑧	BREAK-AWAY SPOOL W/ MACHINE GROOVES OUTSIDE.
⑨	6" CEMENT LINED FIRE HYDRANT BURY MJ x FLG.
⑩	4' x 4' x 4" CONCRETE PAD (WHERE LANDSCAPED PARKWAY IS 4' WIDE, PCC PAD SHALL BE EXTENDED FROM BACK OF CURB TO FRONT OF SIDEWALK).
⑪	MAIN SIZE x 6" M.J. x FLG. D.I. TEE OR TAPPING SLEEVE - MUELLER H615, H616 OR H619.
⑫	2-WAY REFLECTING BLUE PAVEMENT MARKER - STIMSONITE 88AB (SEE NOTE 6).



**NOTES:**

- SERVICE LINE SHALL BE INSTALLED LEVEL WITH MAINLINE UNLESS SHOWN OTHERWISE ON PLAN.
- ALL UNDERGROUND FERROUS SURFACES SHALL BE PROTECTED IN ACCORDANCE WITH THE SPECIFICATIONS. ALL FLG. BOLTS AND NUTS SHALL BE 316 STAINLESS STEEL UNLESS OTHERWISE SPECIFIED.
- ALL PARTS OF THE FACILITY ABOVE GROUND SHALL BE PAINTED IN ACCORDANCE WITH THE SPECIFICATIONS. COLOR OF HYDRANT SHALL BE "RUSTOLEUM" 76-44 SAFETY YELLOW.
- FIRE HYDRANTS SHALL BE LOCATED 5 FEET MIN. FROM DRIVEWAYS OR OTHER OBSTRUCTIONS. NO FIRE HYDRANTS SHALL BE LOCATED IN THE CURB RADIUS.
- ALL BURIED PIPE, VALVES, FITTING ETC... SHALL BE WRAPPED IN 8MIL POLYETHYLENE IN ACCORDANCE WITH THE SPECIFICATIONS.
- PLACE MARKERS SIX INCHES FROM CENTER OF ROADWAY OR PAINTED CENTERLINE ON SIDE NEAREST THE HYDRANT.

ACCOMPING STDS W-300,W-121,W-103,W-150, W-140 & ST-116.

CITY OF LOMITA - PUBLIC WORKS DEPARTMENT

DATE ISSUED	TYPICAL FIRE HYDRANT INSTALLATION FOR LOCAL STREETS & NON-HIGH PRESSURE ZONE	STANDARD NO.
SEPT 1, 2007		W-110
DRAWN BY: SHIVDEV S. BRAR	WENDELL E. JOHNSON, CITY ENGINEER CERTIFICATION NO. C 66340	SHEET 1 OF 1
DATE: AUG 14, 2007		