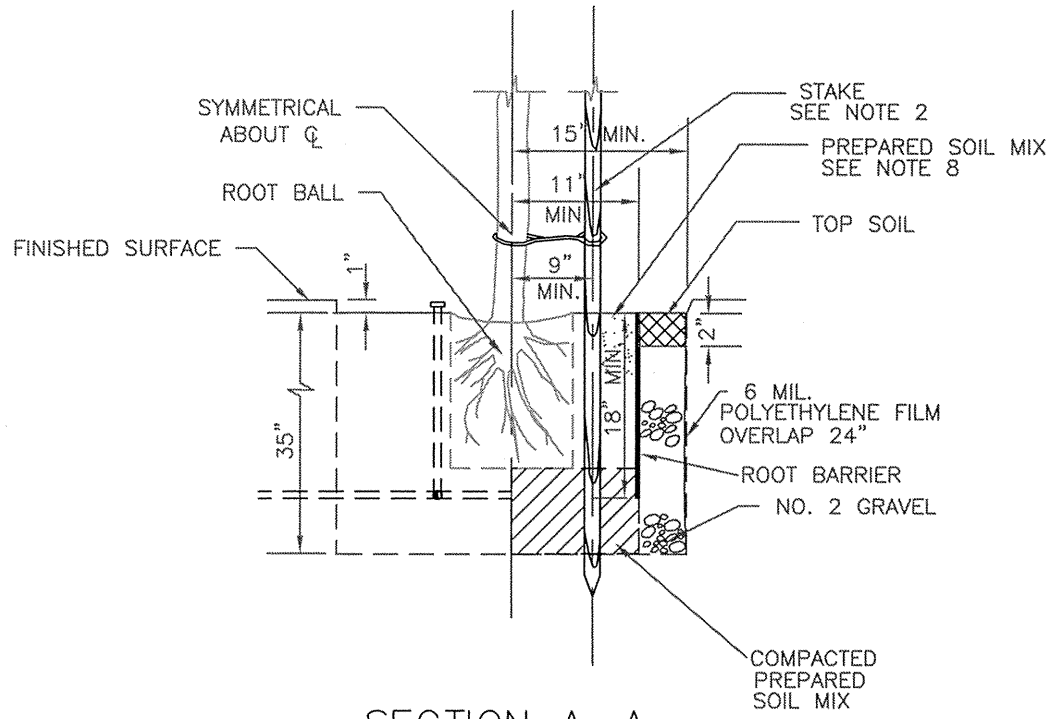


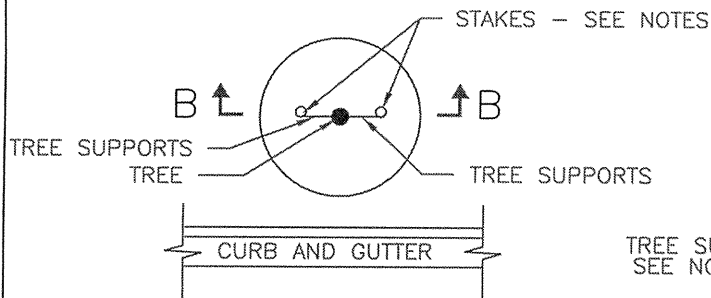
TREE - DIRT PARKWAY



SECTION A-A

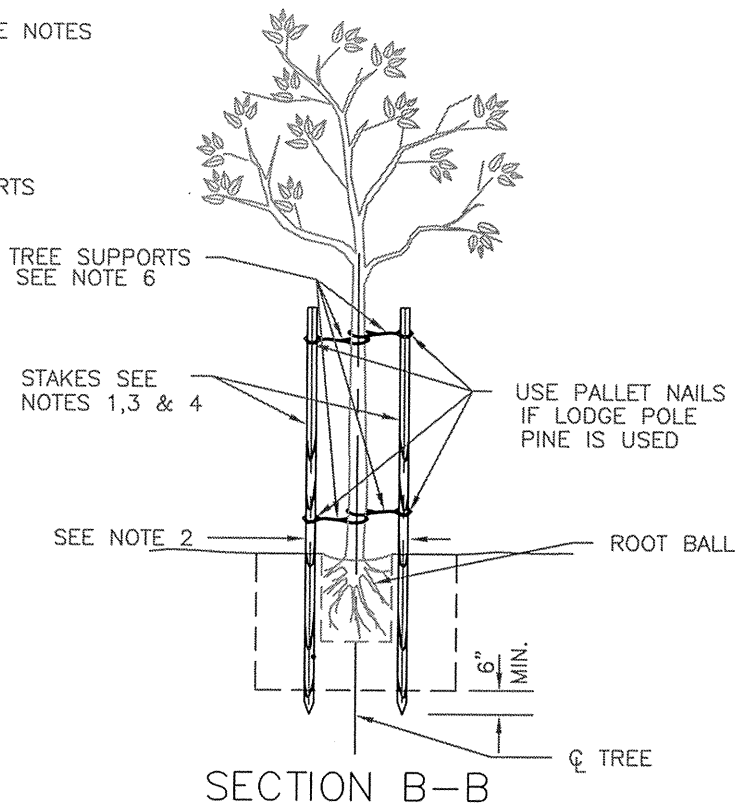
CITY OF LOMITA - PUBLIC WORKS DEPARTMENT

DATE ISSUED	TREE PLANTING	STANDARD NO.
SEPT 1, 2007		ST-401
DATE: AUG 20, 2007	WENDELL E. JOHNSON CITY ENGINEER CERTIFICATION NO. C 66340	SHEET 1 OF 2



PLAN

LENGTH OF STAKES	
TREE SIZE	LENGTH
15 GAL.	10'
24" BOX	12'
30" BOX	12'
36"-48" BOX	SEE NOTE 5



NOTES:

1. STAKES SHALL BE EITHER 2" DIAMETER LODGE POLE PINE, TREATED WITH COPPER NANATHANATE OR PRESSURE TREATED WITH CHROMATED COPPER ARSENATE, OR GALVANIZED STEEL PIPE, PER SUBSECTION 308-4.6.1 (METHOD A) OF THE STD. SPEC'S
2. PLACE STAKES 18" APART FOR 15 GAL. TREE. PLACE STAKES AT OUTER EDGE OF ROOT BALL FOR LARGER SIZE (BOX) TREES.
3. HEIGHT OF STAKES SHALL NOT BE HIGHER THAN THE TOP OF THE TREE.
4. ALL STAKES SHALL BE ALIGNED IN THE EAST-WEST DIRECTION REGARDLESS OF CURB ORIENTATION.
5. FOR 36" OR LARGER BOX TREES - STAKE OR GUY AT THE DIRECTION OF THE STREETScape ADMINISTRATOR.
6. TREE TIES SHALL BE PER SUBSECTION 308-4.6.2 OF THE STANDARD SPECIFICATIONS.
7. THE STREETScape ADMINISTRATOR WILL DESIGNATE THE GROUND LOCATION OF ALL TREES BY PLACING OF STAKES OR OTHER SUITABLE MARKERS.
8. UNLESS OTHERWISE APPROVED BY STREETScape ADMINISTRATOR PREPARED SOIL MIX SHALL BE:
  - 4 PARTS BY VOLUME NITROGEN-STABILIZED ORGANIC AMENDMENT.
  - 6 PARTS BY VOLUME ON-SITE SOIL FROM AN AREA APPROVED BY THE STREETScape ADMINISTRATOR.
  - 2 LBS. IRON SULFATE PER CUBIC YARD OF MIX.
9. ROOT BARRIERS WHEN SPECIFIED ON PROJECT DRAWINGS OR IN PROJECT SPECIFICATIONS, SHALL BE FABRICATED FROM A HIGH DENSITY AND HIGH IMPACT PLASTIC SUCH AS POLYVINYL CHLORIDE, ABS OR POLYETHYLENE AND HAVE A MINIMUM THICKNESS OF 0.06". THE PLASTIC SHALL HAVE 1/2" TO 3/4" HIGH RAISED VERTICAL RIBS ON THE INNER SURFACE SPACED AT LEAST 6" BUT NOT MORE THAN 8" APART.

CITY OF LOMITA - PUBLIC WORKS DEPARTMENT

DATE ISSUED	<p>TREE PLANTING</p> 	STANDARD NO.
SEPT 1, 2007		ST-401
DATE: AUG 20, 2007	WENDELL E. JOHNSON CITY ENGINEER CERTIFICATION NO. C 66340	SHEET 2 OF 2