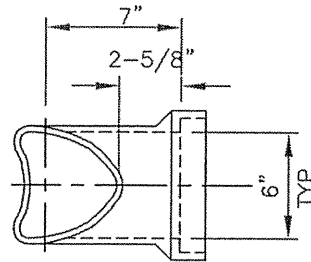


SIDE VIEW

END VIEW



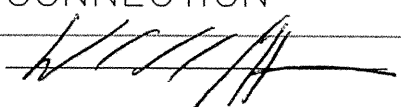
SADDLE PLAN

SHOWING CONTACT OPENING

NOTES:

1. OPENING IN MAIN SEWER SHALL BE CUT TO EXACTLY FIT THE SADDLE AND THE SADDLE SHALL BE CAREFULLY ALIGNED, FITTED & ENCASED IN CEMENT MORTAR AS SHOWN.
2. SADDLE INSTALLATION SHALL BE PERFORMED IN THE PRESENCE OF AN INSPECTOR.
3. INSTALLATION SHALL BE CARRIED OUT IN SUCH A MANNER AS TO PREVENT THE INTRODUCTION OF DIRT, BROKEN PIPE, OR OTHER FOREIGN MATTER INTO THE SEWER PIPE.
4. PIPE TO BE SADDLED SHALL BE A MINIMUM OF ONE SIZE LARGER THAN SIZE OF CONNECTING LATERAL BUT IN NO CASE SHALL THE SIZE OF THE CONNECTING LATERAL BE LARGER THAN 8".

CITY OF LOMITA – PUBLIC WORKS DEPARTMENT

DATE ISSUED	SADDLE CONNECTION	STANDARD NO.
SEPT 1, 2007		S-103
DATE AUG 21, 2007	WENDELL E. JOHNSON, CITY ENGINEER CERTIFICATION NO. C 66340 	SHEET 1 OF 1