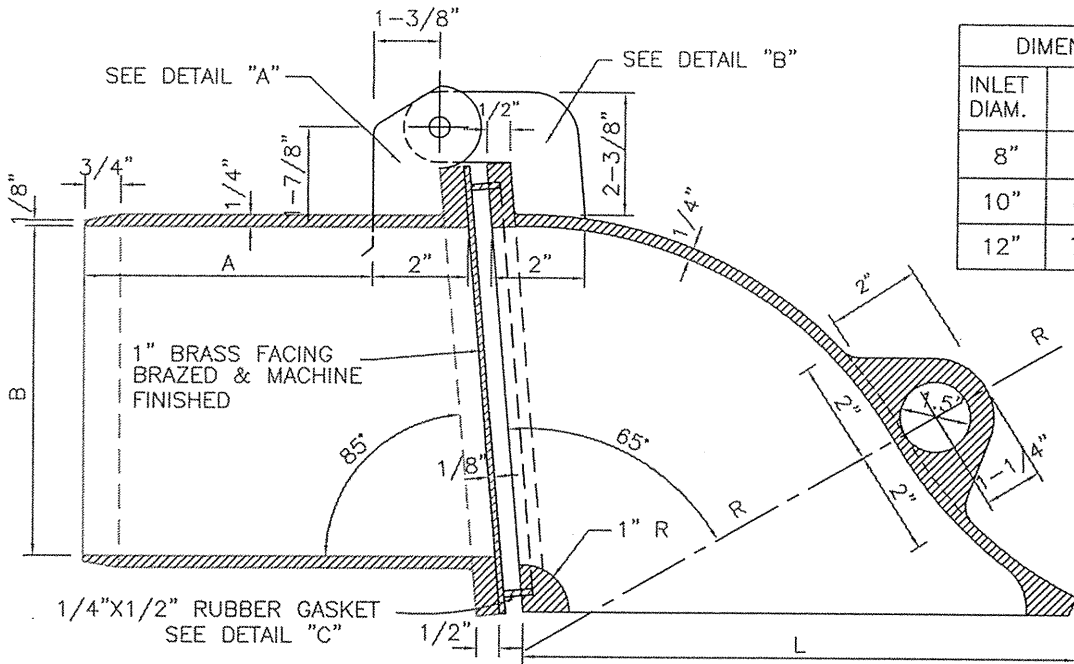


DIMENSIONS OF CASTINGS				
INLET DIAM.	A	B	R	L
8"	6"	7"	9"	11-3/4"
10"	6"	9"	11"	14-3/4"
12"	7"	11"	13"	17-3/4"



SECTIONAL VIEW

1/4"x1/4" GROOVE  
IN FLANGE FACE

1/4"x1/2" RUBBER  
GASKET

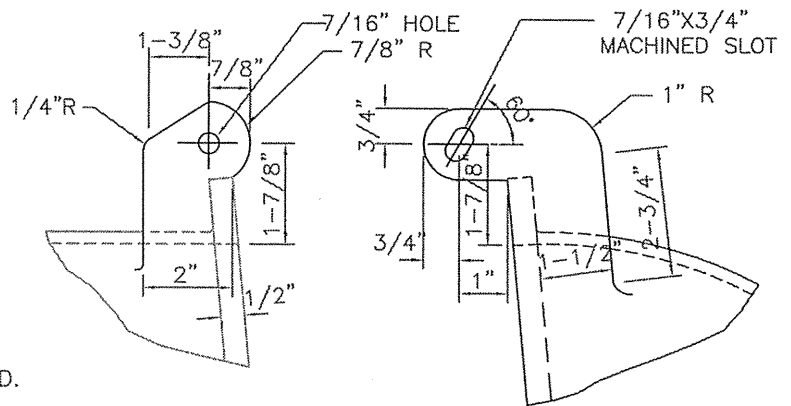
BRASS COTTER PIN  
1" BRASS WASHER

3/8"x6-3/4"  
BRASS ROD

1" BRASS WASHER  
BRASS COTTER PIN

DETAIL "C"

PLAN VIEW



DETAIL "A"

DETAIL "B"

NOTES:

1. THE CAST IRON USED SHALL CONFORM WITH A.S.T.M. A-48 CLASS 30.
2. FLANGES OF CASTINGS TO BE MACHINE FACED.
3. CASTINGS TO BE DIPPED TWICE IN HOT ASPHALT PAINT.
4. RUBBER GASKET TO BE NEOPRENE 45 SHORE.

CITY OF LOMITA - PUBLIC WORKS DEPARTMENT

DATE ISSUED	TRAP CASTING	STANDARD NO.
SEPT 1, 2007		S-102
DATE: AUG 21, 2007	WENDELL E. JOHNSON, CITY ENGINEER CERTIFICATION NO. C 66340	SHEET 1 OF 1