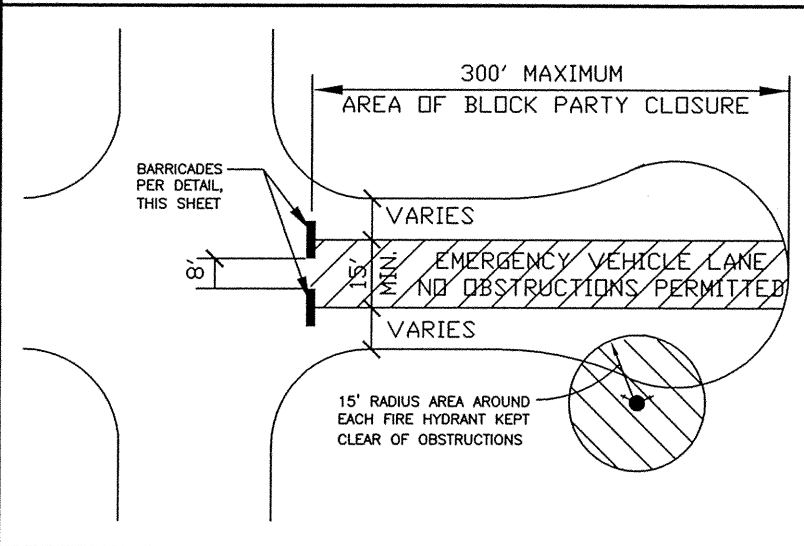
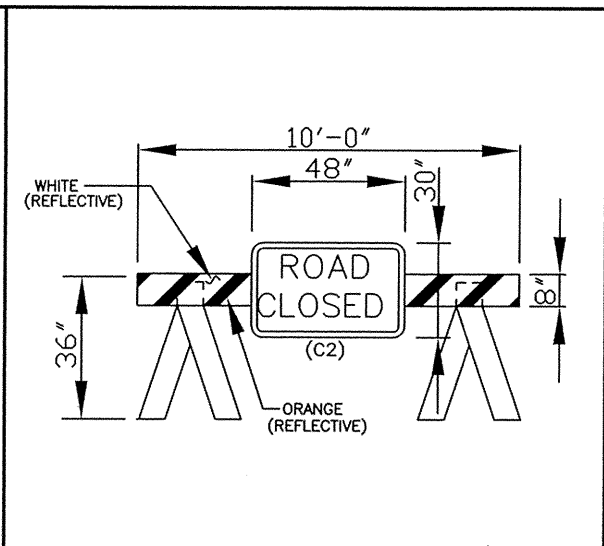


THROUGH STREET CLOSURE (RESIDENTIAL STREET)



CUL-DE-SAC CLOSURE



"TYPE I" CALTRANS BARRICADE

NOTES:

1. THIS CLOSURE STANDARD CONFORMS TO THE LOMITA MUNICIPAL CODE.
2. NO STREET CLOSURE SHALL BE PERMITTED FOR LONGER THAN ONE CALENDAR DAY, NOR SHALL ANY STREET CLOSURE BE PERMITTED BEFORE 8:00 AM OR AFTER 12:00 MIDNIGHT.
3. THE PERMITTEE SHALL SECURE, TRANSPORT, AND ERECT STREET BARRICADES PER THIS CLOSURE STANDARD AND SHALL NOTIFY THE FIRE AND POLICE DEPARTMENTS UPON THEIR PLACEMENT AND REMOVAL LOS ANGELES COUNTY FIRE DEPARTMENT; (310) 326-2461, LOS ANGELES COUNTY SHERIFF DEPARTMENT; (310) 539-1661.
4. ADDITIONS OR MODIFICATIONS TO THIS PLAN MAY BE REQUIRED ON A CASE BY CASE BASIS AS DEEMED NECESSARY FOR THE PROTECTION OF HEALTH AND SAFETY.

CITY OF LOMITA – PUBLIC WORKS DEPARTMENT

DATE ISSUED SEPT 1, 2007	BLOCK PARTY STREET CLOSURE	STANDARD NO. M-104
DATE AUG 23, 2007		WENDELL E. JOHNSON CITY ENGINEER CERTIFICATION NO. C 66340
		SHEET 1 OF 1